

Heysea Yacht Group Limited

Website: www.heyseayacht.com
Email: sales@heysea.com



SEAVIEW 56

— Built by Heysea





SEAVIEW 56

— Built by Heysea



REDEFINED SAILING: LUXURY AND SUSTAINABLE

Seaview sailing catamaran stands out prominently on the global maritime stage, seamlessly blending Heysea's professional design prowess in the realm of super yachts with cutting-edge green technology solutions. Its objective is to deliver a quiet, luxury, and environmentally conscious sailing experience.

Different from other standardized catamarans, Heysea design team sets Seaview apart by prioritizing meticulous details and a profound understanding of how boat owners interact with their vessels. This commitment goes beyond external aesthetics, extending into carefully crafted internal spaces that cater to diverse needs. Whether sailing across expansive oceans or functioning as a vibrant social hub, Seaview excels in fulfilling a diverse range of purposes.

Seaview represents an unequivocal innovation, deserving admiration and enjoyment. Heysea guarantees that even the most discerning sailing enthusiasts will discover every desired element in the Seaview series. We eagerly anticipate the inclusion of more sailing enthusiasts in the journey of this groundbreaking creation, as they script their own maritime legends!



SEAVIEW 56

Built by Heysea





Hydraulic Swim Platform

Large Square Window
Providing natural light and enhancing views

Double Sided Sofa
Enjoy the beautiful sea view

Sunbathing Pad
Dedicated space for relaxation and leisure

PROFILE VIEW

Embark on a journey to discover the remarkable capabilities of the newly unveiled sailing catamaran, Seaview 56. Meticulously crafted by the esteemed British designer Bill Dixon in collaboration with Heysea's accomplished superyacht design team, this exceptional vessel epitomizes multifunctionality. Seamlessly integrating elements of business, leisure, family, entertainment, sailing, sports, chartering, and tourism, it creates a truly multifaceted experience.



FLYBRIDGE

The flybridge, where comfort effortlessly combines with leisure and entertainment. Our serene venue seamlessly blends relaxation with amusement, featuring top-notch barbecue facilities and sun loungers. Whether it's a private gathering or a social event, the flybridge promises exceptional experiences for all.





FOREDECK

On the foredeck, the substitution of traditional wide-net trampolines with a sunbathing pad offers a dedicated space for relaxation and leisure, providing families and guests with a serene retreat amidst the waves. This enhancement combines comfort and style, elevating the sailing experience to unparalleled levels of enjoyment.





AFTDECK

Crafted with a harmonious blend of comfort and practicality, the aftdeck of Seaview 56 features a welcoming sofa and table arrangement, creating an ideal setting for guests to relax and socialize while enjoying the sea breeze.

Complementing this inviting space is the optional hydraulic swim platform, which enhances versatility by effortlessly transforming from a sprawling outdoor area, ideal for entertainment, to a convenient diving platform tailored for water enthusiasts.





MAIN DECK

Step into the elegant sanctuary of the Seaview 56's salon, where natural light streams in through expansive glass windows, illuminating the space from every angle. With dual doors at the front and rear, the salon beckons guests to seamlessly transition between the captivating vistas of the sea on both the foredeck and aftdeck. Embark on a journey of enchantment and exploration amidst the boundless beauty of the ocean.







LOWER DECK

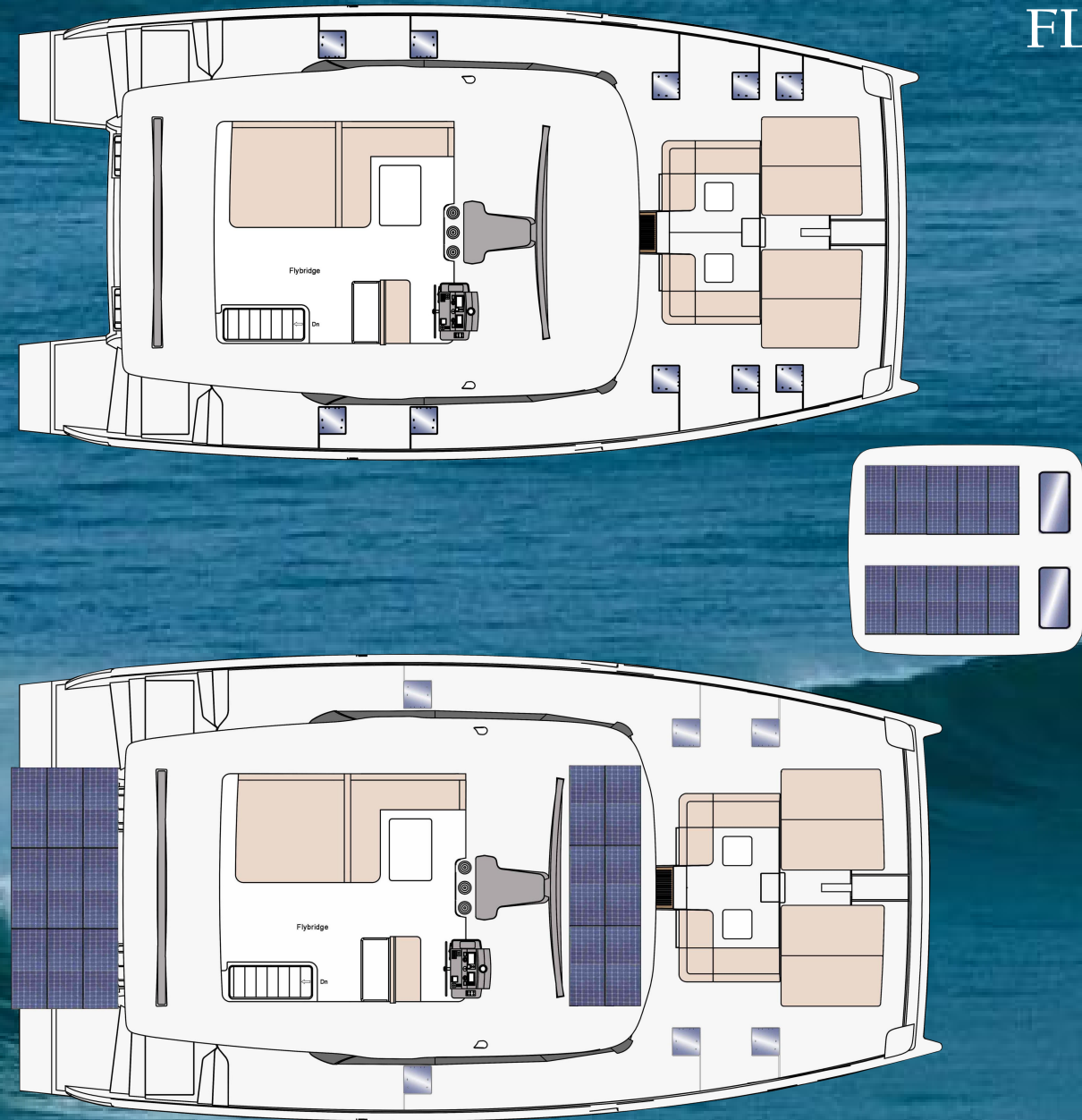
As you make your way to the lower deck of the Seaview 56, prepare to be captivated by its expansive layout, which offers a remarkable 30% more living space than yachts of similar size. Explore four to six meticulously designed cabins, each boasting its own en-suite bathroom, promising not only solo adventures but also unforgettable journeys with your family and friends.



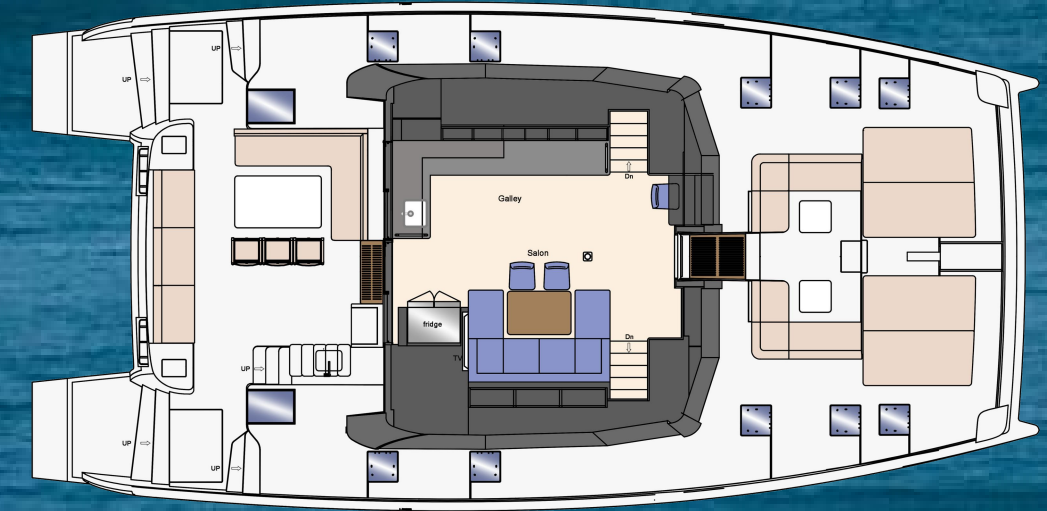




FLYBRIDGE

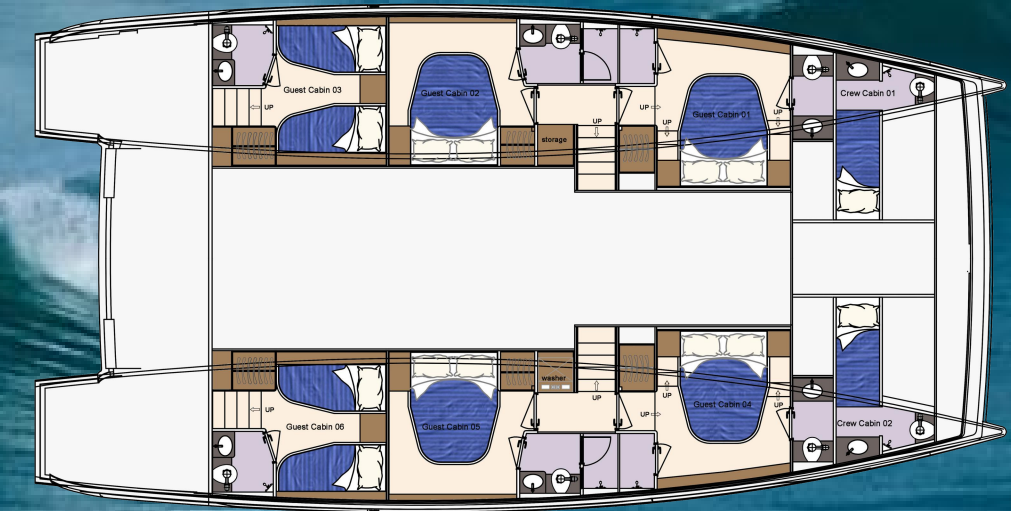


MAIN DECK



LOWER DECK

Charter Version:
6 Guest Cabins + 2 Crew Cabins



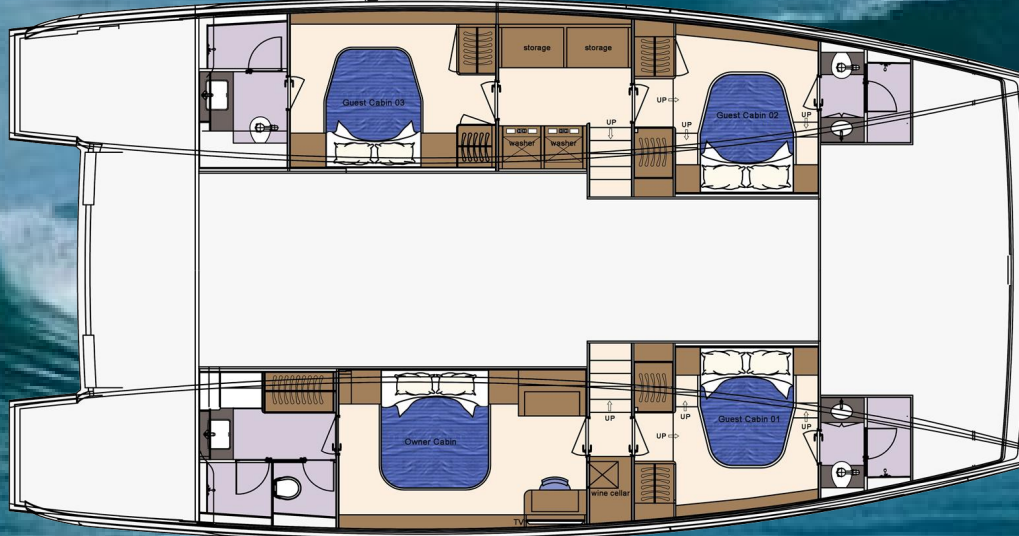
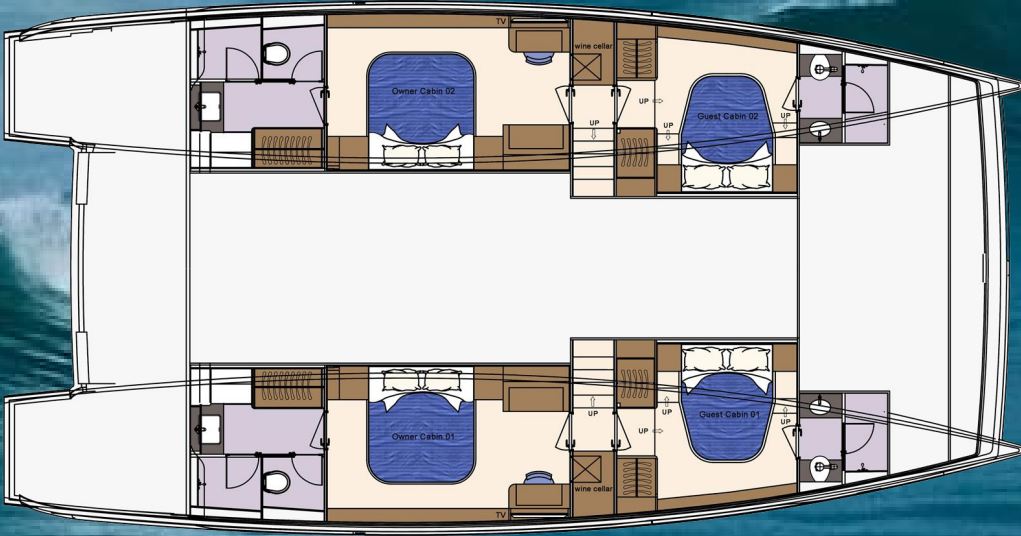
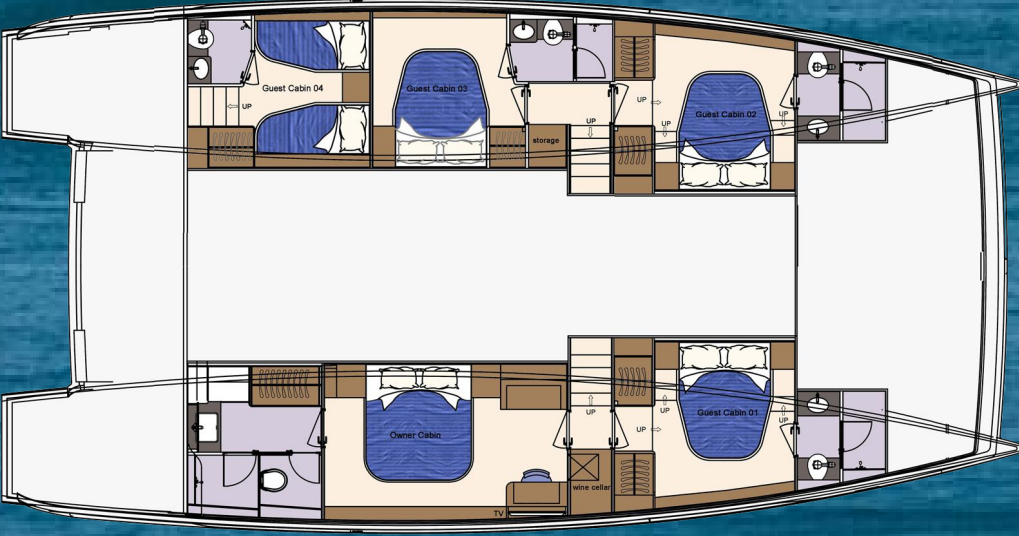
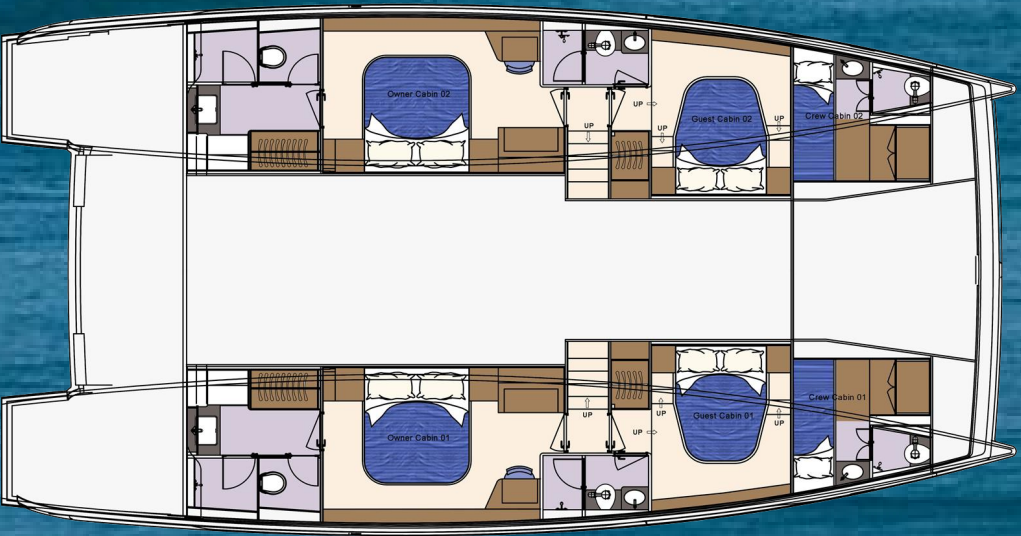
LOWER DECK

Owner Version 1:
2 Owner Cabins + 2 Guest Cabins
+ 2 Crew Cabins

Owner Version 2:
1 Owner Cabin + 4 Guest Cabins

Owner Version 3:
2 Owner Cabins + 2 Guest Cabins

Owner Version 4:
1 Owner Cabin + 3 Guest Cabins



SEAVIEW 56

Built by Heysea

SPECIFICATION

Length Overall:	18.0M (59'1")
Beam:	8.8M (28'9")
Draft:	1.62M (5'3")
Fuel Capacity:	2 x 500Ltrs (264 US Gal.)
Freshwater Capacity:	1000Ltrs (264 US Gal.)
Mast Height above Waterline:	28M (91'9")
Main Sail Area (appr.):	110m ²
Jib Sail Area (appr.):	70m ²
Engine:	2 x VOLVO 75HP
Generators:	Kohler 20.5KW @ 50Hz
Speed with Engines:	8-10 Knots
Speed with Sails:	8-10 Knots
Navigation:	Category A
Builder:	Heysea Yachts
Exterior Design:	Bill Dixon

